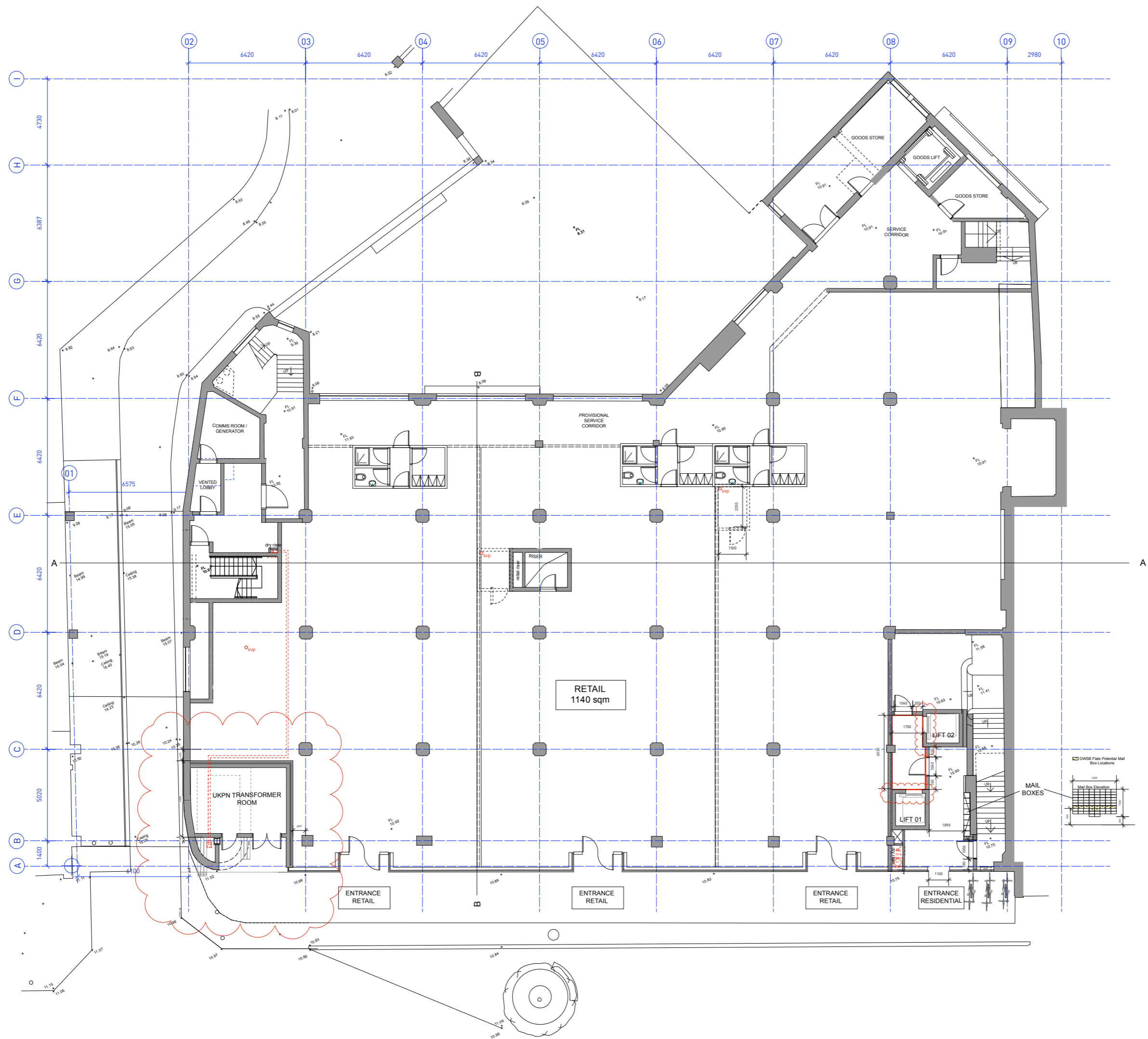


Construction (Design and Management) Regulations
 Design risk assessments are carried out throughout the design stage of this project, in accordance with the company procedures and technical manuals. Where reasonably possible, areas of risk applicable to the design have been identified and then eliminated, mitigated or noted for action. Please note that specific risks may remain and are to be taken into consideration when developing these drawings or executing works shown thereon. Note that general risks of which a competent designer or contractor should be aware are not included. This drawing is to be read in conjunction with the safety plan and all related documents prepared in accordance with current Construction (Design and Management) Regulations and all subsequent amendments.



J	UPDATED TO GUT TRANSFORMER LAYOUT	25/06/14	CW	NM
I	AREA UPDATED	17/06/14	CW	NM
H	UPDATED TO SHOW NEW TRANSFORMER ARRANGEMENT	17/06/14	CW	NM
G	UPDATED TO SHOW NEW DOOR ARRANGEMENT & LIFT SIZES	14/06/13	CW	NM
F	UPDATED TO SHOW NEW DOOR SIZES	12/06/13	CW	NM
E	UPDATED LAYOUT TO CREATE LARGER RETAIL, BETTER W.C. & ACCESSIBLE PLANT SPACES	12/06/13	CW	NM
D	REMOVED EXISTING CHIMNEY AND PLANNED PROPOSED FLUE LOCATIONS	18/01/13	CW	NM
C	UPDATED BASED FOLLOWING SCHEMATIC DEVELOPMENT	24/06/13	CW	NM
B	GENERAL UPDATE	28/07/13	CW	NM
A	GENERAL UPDATE & GRID REFERENCES ETC ADDED	08/11/13	CW	NM

Rev	Description	Date	By	Check

lawray architects
 Southbank House, Black Prince Road,
 London, SE1 7SL
 Tel: 020 7138 2548
 Fax: 020 7138 2547
 www.lawray.co.uk
 mail@lawray.com
 Also at Cardiff and Wrexham

CLIENT	Laxcon Developments LTD		
JOB TITLE	Former Co-op 138 - 152 Powis St, Woolwich London		
DRAWING TITLE	Proposed Ground Floor Plan		
DATE	JUL '13	SCALE	1:100@A1 1:200@A3
DRAWN	NC	CHECKED	NM
JOB NO.	357	DRAWING NO.	AL(2)01
REV			J

DO NOT SCALE Produced On 'AutoCAD 2006' Copyright LAWRAY LIMITED.
 Any discrepancy or query concerning this drawing should be referred to the Architect